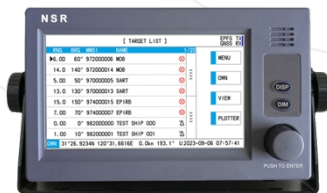


- Meet the latest IMO regulation and ITU standards
- Compatible with AIS AtoN, AIS SART, AIS MOB, AIS EPIRB
- GPS, BDS, GLONASS positioning mode
- High stability and easy maintenance
- Built-in isolated PSU with wide range input
- Type approval with CCS



**AIS TRANSPONDER**



**MKD**



**10.1" PLOTTER**

- NAB-1000 AIS system, which adopts CSTDMA technology, is designed for use on non-Solas vessels.
- NAB-1000 can communicate with other AIS transponders, including shipborne Class A AIS, Class B AIS, AIS SART, AIS MOB, AIS EPIRB, AtoN AIS station, AIS base station.
- NAB-1000 conforms to the international standards, such as IEC 62287-1, ITU-R M.1371-5.



## SPECIFICATIONS

- Frequency: 156.025 ~ 162.025 MHz
- Default Channel: AIS 1, AIS 2
- Band width: 25 kHz
- Output Power: 2 W
- Comm. Mode: CSTDMA
- Sensitivity: Better than -110 dBm
- Data Ports: RS232/RS422, NMEA 0183, 38400bps
- Ant Connectors: 50  $\Omega$ , TNC (GNSS Ant), BNC (VHF Ant)
- Power Supply: DC 24 V (range 12 V ~ 38 V)
- Size: 81 (H)  $\times$  174 (W)  $\times$  160 (D) mm (Transponder)
- Weight: 1.4 kg (Transponder)
- IP Grade: IP22 (Transponder, MKD, Plotter), IP66 (Antenna)

## EQUIPMENT LIST

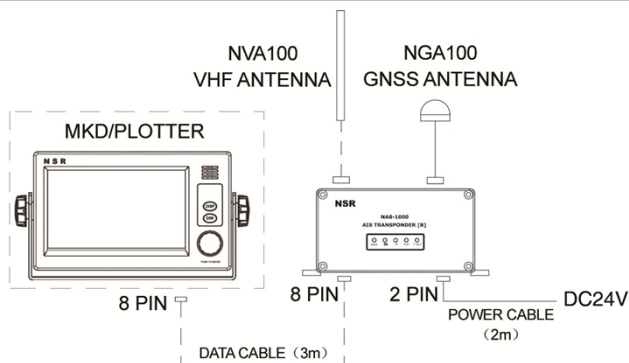
### ● STANDARD

- |                                 |          |       |
|---------------------------------|----------|-------|
| - AIS Transponder [B]           | NAB-1000 | 1 pc  |
| - GNSS Antenna (with 10m cable) | NGA100   | 1 pc  |
| - Accessories                   |          | 1 set |

### ● OPTIONS

- |                                       |           |      |
|---------------------------------------|-----------|------|
| - MKD                                 | NSI-1000D | 1 pc |
| - Plotter (10.1 inch)                 | NES-3010  | 1 pc |
| - VHF Antenna (with cable)            | NVA100    | 1 pc |
| - Flush Mount Bracket for MKD/Plotter |           | 1 pc |

## SYSTEM DIAGRAM



## SIZE DIMENSION

